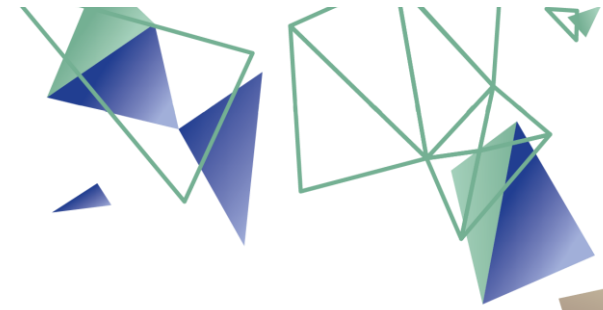


Interreg - IPA CBC

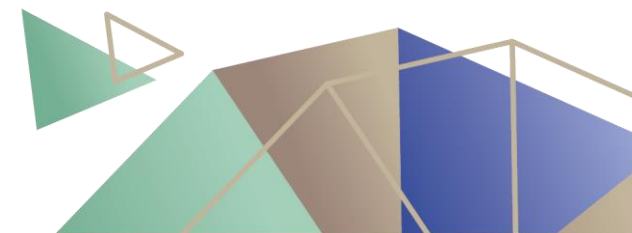


CCI 2014 TC 16 I5CB 009

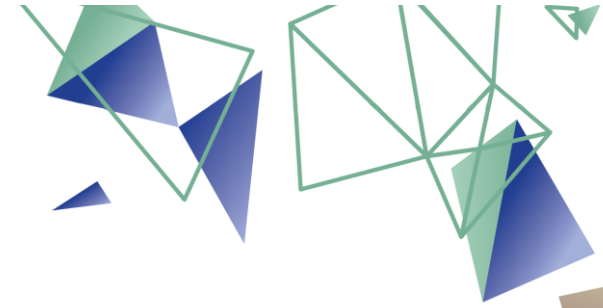


Training seminar on financial management for IPA beneficiaries

Information module



Co-funded by the European Union and National Funds of the participating countries



Information module

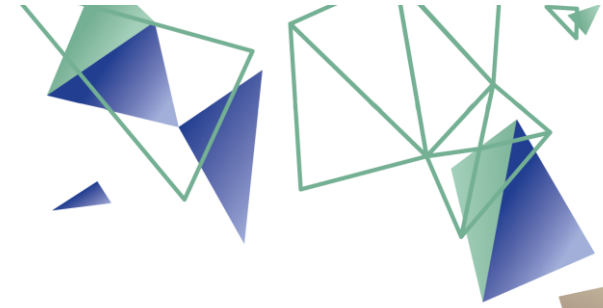
- Collection and storing data on the expenditures of the projects for each reporting period. It can generate different reports on the projects financial implementation.
- Ensures appropriate transfer of information about the requested verifications, performed verifications by First Level Controllers (FLC) and control mechanisms. It shall allow the information about the FLC and all respective correspondence with beneficiaries to reach all involved parties and shall maintain appropriate audit trail of the FLC.

Information module

This module consists of two sections:

- **A. FIRST LEVEL CONTROL – FLC**

- **B. PAYMENT SECTION**



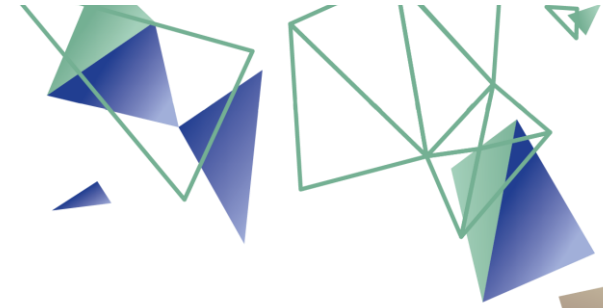
Information module

A. FIRST LEVEL CONTROL – FLC

- Contains information on aggregated project data per budget line, the budget goals and the planned spending; automatic generation of FLC Certificates. These certificates must be pre-filled using information from the currently valid version of the application form.

Additionally, this section provides:

- A summary table of expenditures presenting aggregated information from all project partners. This table must show the different budget lines.
- Separate tables of expenditures per project partner
- The FLC report and appeal declarations and the results of the appeals
- The progress of the examination is clearly visible at any time by highlighting the currently active step.
- After each step of the examination an approval (with date) is stored. This approval allows for processing the project report by the next authority.



Information module

B. PAYMENT SECTION

- Once all examinations by the authorities are done and the payment is approved and carried out the date of the payment per funding source is stored.
- The payment module must deduct recoveries/withdrawals from the payment claim. The amount to be recovered /withdrawn must be visible.
- Design and customization of inquiry tables, based on chosen criteria;
- Generation of inquiry tables, based on chosen criteria.